



OPEN ACCESS

## EXTENDED REPORT

# A pivotal phase III, randomised, placebo-controlled study of belimumab in patients with systemic lupus erythematosus located in China, Japan and South Korea

Fengchun Zhang,<sup>1</sup> Sang-Cheol Bae,<sup>2</sup> Damon Bass,<sup>3</sup> Myron Chu,<sup>3</sup> Sally Egginton,<sup>4</sup> David Gordon,<sup>3</sup> David A Roth,<sup>3</sup> Jie Zheng,<sup>5</sup> Yoshiya Tanaka<sup>6</sup>

**Handling editor** Tore K Kvien

<sup>1</sup>Department of Rheumatology, Peking Union Medical College Hospital, Chinese Academy of Medical Sciences and Peking Union Medical College, Beijing, China

<sup>2</sup>Department of Rheumatology, Hanyang University Hospital for Rheumatic Diseases, Seoul, Korea

<sup>3</sup>GlaxoSmithKline, Philadelphia, Pennsylvania, USA

<sup>4</sup>GlaxoSmithKline, Stevenage, UK

<sup>5</sup>Department of Dermatology, Ruijin Hospital, School of Medicine, Shanghai Jiaotong University, Shanghai, China

<sup>6</sup>The First Department of Internal Medicine, University of Occupational and Environmental Health, Japan, Kitakyushu, Japan

## Correspondence to

Professor Fengchun Zhang, Peking Union Medical College Hospital, Chinese Academy of Medical Sciences and Peking Union Medical College, Beijing Shi, China, 100730; zhangfccra@aliyun.com

Data from this study have previously been presented at the American College of Rheumatology Annual Scientific meeting (ACR2016), the 12th International Congress on Systemic Lupus Erythematosus (LUPUS 2017) and the Japan College of Rheumatology 61st Annual Scientific Meeting (JCR 2017).

Received 11 April 2017

Revised 26 October 2017

Accepted 31 October 2017

Published Online First

2 January 2018



Check for updates

**To cite:** Zhang F, Bae S-C, Bass D, et al. *Ann Rheum Dis* 2018;**77**:355–363.

## ABSTRACT

**Background** Intravenous belimumab plus standard of care (SoC) is approved in the USA and Europe for treatment of active, autoantibody-positive systemic lupus erythematosus (SLE).

**Methods** This phase III, multicentre, randomised, double-blind, placebo-controlled study (BEL113750; NCT01345253) was conducted in 49 centres across China, Japan and South Korea (May 2011–September 2015). Patients with SLE were randomised 2:1 to intravenous belimumab 10 mg/kg or placebo, plus SoC, every 4 weeks until Week 48. The primary endpoint was the SLE Responder Index (SRI) 4 response rate at Week 52. Secondary endpoints were the percentage of patients with  $\geq 4$  point reduction in Safety of Oestrogens in Lupus Erythematosus National Assessment-SLE Disease Activity Index (SELENA-SLEDAI), SRI7, time to first severe flare and number of days prednisone (or equivalent) dose  $\leq 7.5$  mg/day and/or reduced by 50% from baseline. Safety was assessed.

**Results** The modified intent-to-treat population included 677 patients (belimumab  $n=451$ , placebo  $n=226$ ). At Week 52, the SRI4 response rate was higher with belimumab versus placebo (53.8% vs 40.1%; OR: 1.99 (95% CI: 1.40, 2.82;  $P=0.0001$ )). The percentages of patients with a  $\geq 4$  point reduction in SELENA-SLEDAI and an SRI7 response were significantly greater for belimumab versus placebo. Patients in the belimumab group had a 50% lower risk of experiencing a severe flare than those receiving placebo ( $P=0.0004$ ). In patients with baseline prednisone dose  $>7.5$  mg/day, there was a significant reduction in steroid use favouring belimumab ( $P=0.0228$ ). The incidence of adverse events was similar between groups.

**Conclusions** In patients with SLE from North East Asia, belimumab significantly improved disease activity, while reducing prednisone use, with no new safety issues.

## INTRODUCTION

Systemic lupus erythematosus (SLE) is a chronic, remitting autoimmune disease resulting in morbidity, mortality and poor quality of life.<sup>1–3</sup> Patients with SLE are susceptible to organ damage accrual caused by both active disease and medication toxicities.<sup>4,5</sup>

Conventional SLE therapies include corticosteroids, antimalarials and non-steroidal anti-inflammatory drugs (NSAIDs) for those without major organ involvement, with immunosuppressive

agents prescribed in severe refractory disease.<sup>6</sup> For those with high disease activity, there is little evidence for substantial benefits with currently available treatments.<sup>6</sup> Moreover, corticosteroid use is associated with significant side effects, particularly in the long term.<sup>7</sup> While prognosis of SLE has improved substantially over the last 40 years, there remains an unmet need for an effective treatment with an acceptable safety profile, particularly in those with high disease activity, with corticosteroid reduction remaining an important treatment goal in these patients.<sup>8</sup>

SLE is associated with elevated levels of B lymphocyte stimulator (BLyS) protein, which enhances B cell proliferation<sup>9</sup> and Ig secretion,<sup>10</sup> and is critical to B cell survival.<sup>11–12</sup> Belimumab is a human, IgG1 $\lambda$  monoclonal antibody that binds soluble human BLyS and inhibits its activity.<sup>13–15</sup> Intravenous belimumab 10 mg/kg is approved in the USA and Europe to treat adults with active, autoantibody-positive SLE who are receiving standard of care (SoC).<sup>14–15</sup> The safety and efficacy profile of belimumab in this patient group was demonstrated in three phase III studies: Study of Belimumab in Subjects with SLE (BLISS)-52,<sup>16</sup> conducted in South America, Asia-Pacific and Eastern Europe; BLISS-76,<sup>17</sup> conducted primarily in North America and Europe and Study of Belimumab in Subjects with SLE-Subcutaneous (BLISS-SC), conducted in North, Central and South America, Eastern and Western Europe, Australia and Asia.<sup>18</sup> Two open-label extension studies (BEL112233<sup>19</sup> and BEL112234<sup>20</sup>) assessed long-term safety and efficacy in patients who completed BLISS-76 and BLISS-52. In addition to significant improvements in disease activity, the results of these studies suggested that belimumab may have a corticosteroid-sparing effect.<sup>16–18</sup>

The prevalence of SLE in Mainland China and Hong Kong ranges from 37.7/100 000 to 58.8/100 000,<sup>21–22</sup> with some figures ranging as high as 40–100 cases per 100 000 persons and  $>100/100$  000 in women.<sup>23–24</sup> In South Korea, SLE prevalence was 26.5/100 000 in 2010.<sup>25</sup> The Chinese SLE Treatment and Research Group developed an online registry in 2009 to depict major clinical characteristics of SLE in the Chinese population and compared these against similar observational cohorts in the USA and Europe. The results of the observed clinical manifestations of 2104 patients showed some important differences, most notably an increase in

haematological disorders in the Chinese population compared with European cohorts, an increase in kidney disease diagnosis among Chinese patients and fewer neurological manifestations compared with both European and US cohorts.<sup>23</sup> Further studies are needed to investigate the epidemiology of SLE within the North East Asian population and the potential genetic and environmental contributory factors.

As numbers of patients from North East Asia were low in previous studies of belimumab, the aim of the present study was to evaluate the efficacy and safety of belimumab as add-on therapy to SoC in patients with autoantibody-positive SLE in North East Asia.

## METHODS

### Study design

This was a phase III, multicentre, randomised, double-blind, placebo-controlled study (BEL113750; NCT01345253) conducted in 49 centres across China, Japan and South Korea between May 2011 and September 2015. Patients completed a screening period of up to 5 weeks, following which they were randomised (2:1) to receive belimumab 10 mg/kg intravenously or placebo, in addition to SoC, on Days 0, 14 and 28 and then every 28 days up to Week 48 (figure 1A). An open-label extension period is ongoing in China.

Randomisation schedules were created by GlaxoSmithKline (GSK) using validated software (RandAll). The block size was three and the randomisation was stratified by screening Safety of Oestrogens in Lupus Erythematosus National Assessment-SLE Disease Activity Index (SELENA-SLEDAI;  $\leq 9$  vs  $\geq 10$ ), complement (low C3 and/or C4 vs no low C3 or C4) and country of origin. GSK's proprietary interactive voice response system Registration and Medication Ordering System was used for this study. Staff members preparing belimumab and placebo formulations, which were identical in appearance and labelled in a double-blind manner, were not involved in other study activities. A protocol summary is available in the GSK Clinical Study Register (<https://www.gsk-clinicalstudyregister.com/>).

### Patients

Enrolled patients were  $\geq 18$  years of age with a clinical diagnosis of SLE according to American College of Rheumatology classification criteria<sup>26</sup> and clinically active disease, defined as a SELENA-SLEDAI score  $\geq 8$  at screening. Patients also had to have a positive antinuclear antibody test result (either from two independent time points within the study screening period or one positive historical test result and one positive test result during the screening period) and be receiving a stable SLE treatment regimen (corticosteroids (all doses reported as prednisone or equivalent), antimalarials, NSAIDs or any other immunosuppressive or immunomodulatory therapy) for  $\geq 30$  days prior to baseline (table 1).

Patients with severe lupus kidney disease or active nephritis requiring acute therapy within 90 days prior to baseline or central nervous system (CNS) lupus requiring therapeutic intervention within 60 days prior to baseline and those requiring new SLE medications other than corticosteroids within 60 days prior to baseline were excluded, as were those who had received B cell-targeted therapy at any time. All patients provided written informed consent. Key inclusion and exclusion criteria can be found in the online supplementary material.

### Assessments

The primary endpoint was the SLE Responder Index 4 (SRI4) response rate at Week 52 (defined as a  $\geq 4$  point reduction from baseline in SELENA-SLEDAI score, no worsening ( $<0.3$  point increase from baseline) in Physician's Global Assessment (PGA) and no new British Isles Lupus Assessment Group (BILAG) A organ domain score or two new BILAG B organ domain scores vs baseline).<sup>27</sup> SRI4 response over time was also analysed.

Secondary endpoints were the percentage of patients with a  $\geq 4$  point reduction from baseline in SELENA-SLEDAI score at Week 52, the percentage of patients with an SRI7 response ( $\geq 7$  point reduction from baseline in SELENA-SLEDAI score, no worsening ( $<0.3$  point increase from baseline) in PGA and no new BILAG A organ domain score or two new BILAG B organ domain scores vs baseline) at Week 52, time to first severe flare (according to the modified SLE Flare Index (SFI)<sup>28–30</sup>) over 52 weeks and number of days of daily prednisone dose (or equivalent)  $\leq 7.5$  mg/day and/or reduced by 50% from baseline over 52 weeks in patients with baseline dose  $>7.5$  mg/day.

Additional prednisone (or equivalent) assessments included the cumulative prednisone dose over 52 weeks and the percentage of patients whose average prednisone dose was reduced by  $\geq 25\%$  from baseline to  $\leq 7.5$  mg/day (or equivalent) during Weeks 40–52.

Other endpoints included duration of SRI4 response at 52 weeks and BILAG improvement by organ domain in patients with an A or B domain score at baseline.

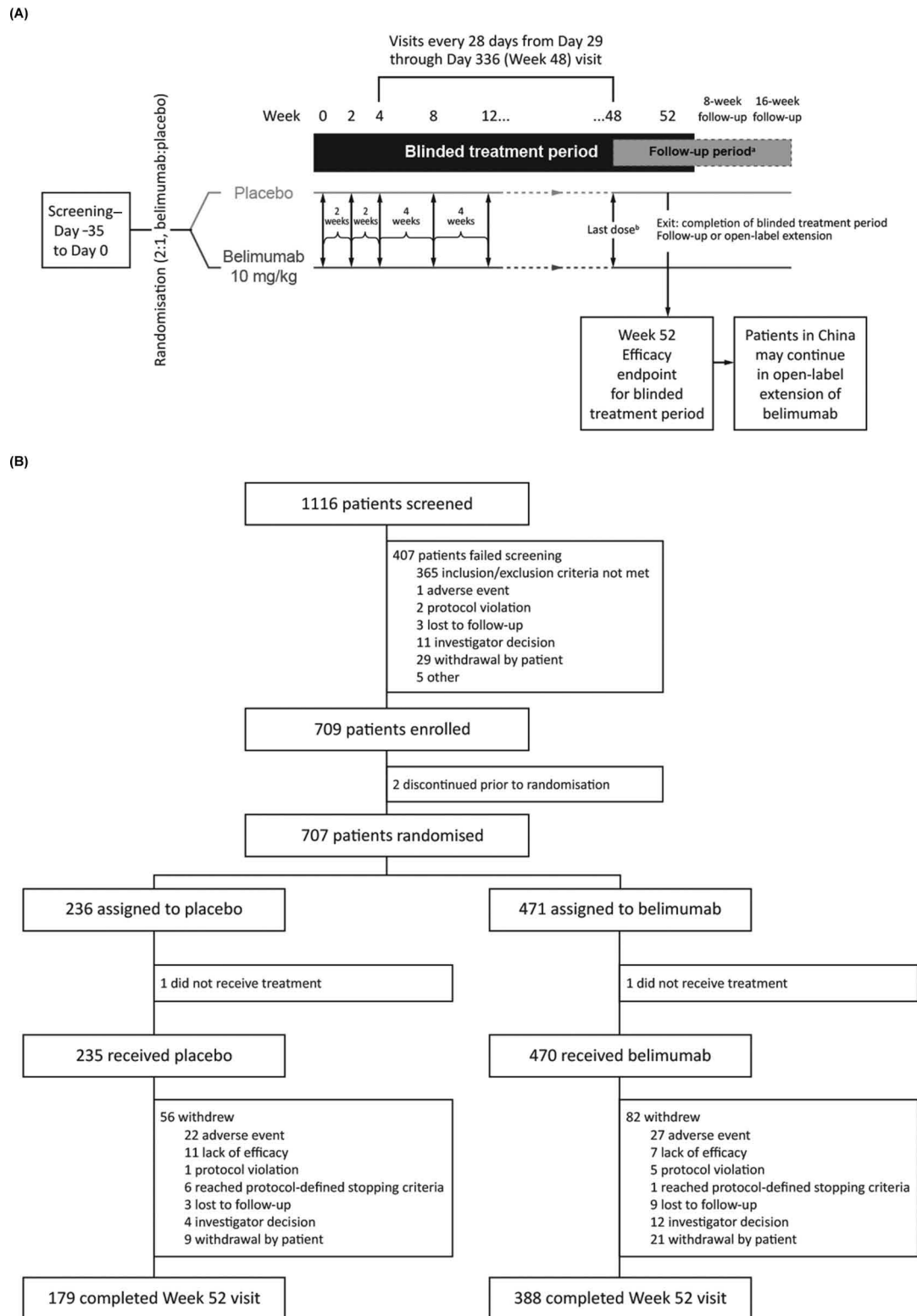
Safety variables included: adverse events (AEs), serious AEs (SAEs) and AEs of special interest (AESIs) (malignant neoplasms, post-infusion systemic reactions, all infections, depression/suicide/self-injury and deaths) throughout the study period; Columbia-Suicide Severity Rating Scale (C-SSRS) at every visit; clinically significant changes in haematological or clinical chemistry parameters or urinalysis and immunogenicity. Physical examinations and measurement of vital signs were also carried out.

### Statistical analysis

The target sample size was 702 patients (belimumab  $n=468$ ; placebo  $n=234$ ) to provide 85% power to detect a 12% treatment difference on the primary SRI4 endpoint (38.6% vs 50.6%) assuming a type I error of 5%.

Safety endpoints were assessed in the safety population, which included all randomised patients who received  $\geq 1$  dose of study drug. Efficacy endpoints were assessed in the modified intent-to-treat (mITT) population, which comprised the safety population, with the exclusion of 28 patients from one site (due to compliance issues). For the primary endpoint, sensitivity analyses were carried out in: the completers population, which included all patients in the mITT population who completed all 52 weeks of the planned treatment period; the per-protocol population, which included all patients in the mITT population who completed the study without a protocol deviation and the medications population, which included all patients in the mITT population except those with post-baseline increases in usage of the traditional Chinese medications glucosides of paeony or tripterygium.

Significance tests were performed at a two-sided 5% alpha level. A step-down sequential testing procedure was used to control the overall type I error rate for the testing of the primary and key secondary efficacy endpoints, whereby statistical significance of the primary endpoint led to testing of the secondary disease activity endpoints (percentage of patients with a  $\geq 4$  point



**Figure 1** (A) Study design; (B) Consolidated Standards of Reporting Trials (CONSORT) flow diagram. <sup>a</sup>Follow-up period for those not entering the open-label period; <sup>b</sup>last dose for those not entering the open-label period.

reduction from baseline in SELENA-SLEDAI score at Week 52 and percentage of SRI7 responders at Week 52), and statistical significance of the secondary disease activity endpoints led to testing of the secondary disease management endpoints (number of days of daily prednisone dose  $\leq 7.5$  mg/day (or equivalent) and/or reduced by 50% from baseline over 52 weeks and time to first severe SFI flare over 52 weeks).

The primary endpoint and the secondary disease activity endpoints were analysed using a logistic regression model, with independent variables treatment group, country, baseline SELENA-SLEDAI score and complement levels. The secondary endpoint number of days of daily prednisone dose  $\leq 7.5$  mg/day (or equivalent) and/or reduced by 50% from baseline over 52 weeks was analysed using a rank analysis of covariance (ANCOVA) model

**Table 1** Baseline patient characteristics

Characteristic	Placebo (n=226)	Belimumab 10 mg/kg (n=451)
<b>mITT population</b>		
Country, n (%)		
China	171 (75.7)	346 (76.7)
Korea	34 (15.0)	66 (14.6)
Japan	21 (9.3)	39 (8.6)
Female, n (%)	210 (92.9)	419 (92.9)
Age (years), mean (SD)	31.7 (9.18)	32.3 (9.65)
BMI (kg/m <sup>2</sup> ), mean (SD)	22.3 (4.04)*	22.3 (3.42)
SLE disease duration (years), mean (SD)	5.97 (5.19)	6.07 (5.04)
BILAG organ domain involvement <sup>†</sup> , n (%)		
At least 1A or 2B	108 (47.8)	204 (45.2)
At least 1A	24 (10.6)	40 (8.9)
At least 1B	174 (77.0)	361 (80.0)
No A or B	46 (20.4)	79 (17.5)
BILAG organ domain involvement (A or B), by category, n (%)		
General	12 (5.3)	24 (5.3)
Mucocutaneous	106 (46.9)	225 (49.9)
Neurological	1 (0.4) <sup>‡</sup>	0
Musculoskeletal	64 (28.3)	119 (26.4)
Cardiovascular and respiratory	2 (0.9)	2 (0.4)
Vasculitis	29 (12.8)	59 (13.1)
Renal	60 (26.5)	109 (24.2)
Haematology	50 (22.1)	94 (20.8)
SELENA-SLEDAI category, n (%)		
≤9	102 (45.1)	218 (48.3)
≥10	124 (54.9)	233 (51.7)
SELENA-SLEDAI score, mean (SD)	10.2 (4.11)	9.8 (3.83)
SFI*, n (%)		
At least one flare	28 (12.4)	53 (11.8)
At least one severe flare	10 (4.4)	15 (3.3)
PGA category, n (%)		
0–1	8 (3.5)	26 (5.8)
>1–2.5	209 (92.5)	413 (91.6)
>2.5	8 (3.5)	11 (2.4)
Missing	1 (0.4)	1 (0.2)
SDI score		
Mean (SD)	0.3 (0.61)	0.2 (0.55)
Median (min, max)	0.0 (0, 4)	0.0 (0, 4)
Allowable SLE concomitant medications, n (%)		
Steroids	223 (98.7)	443 (98.2)
Antimalarials	157 (69.5)	320 (71.0)
Other immunosuppressive/immunomodulatory agents	146 (64.6)	292 (64.7)
Azathioprine	15 (6.6)	48 (10.6)
Leflunomide	19 (8.4)	46 (10.2)
Methotrexate/methotrexate sodium	15 (6.6)	29 (6.4)
Mycophenolic acid/mycophenolate mofetil	75 (33.2)	130 (28.8)
Traditional Chinese medicine—glycosides of paeony/tripterygium	31 (13.7)	59 (13.1)
<b>Safety population</b>	<b>n=235</b>	<b>n=470</b>
Anti-dsDNA positive (≥30 IU/mL), n (%)	186 (79.1)	385 (81.9)
ANA positive (index ≥0.8), n (%)	234 (99.6) <sup>§</sup>	470 (100)
Low C3 (<90 mg/dL), n (%)	163 (69.4)	344 (73.2)
Low C4 (<10 mg/dL), n (%)	77 (32.8)	139 (29.6)

\*n=225.

<sup>†</sup>Patients may have been included in more than one category.<sup>‡</sup>One patient had a seizure between the screening and baseline visits, which resulted in the BILAG neurological domain (seizure) being scored at the Day 0 (baseline) visit.<sup>§</sup>One patient was positive during the screening period (as per the inclusion criteria), but not at baseline.

ANA, antinuclear antibody; Anti-dsDNA, anti-double-stranded DNA; BILAG, British Isles Lupus Assessment Group; BMI, body mass index; C3/C4, complement 3/complement 4; mITT, modified intent-to-treat; PGA, Physician's Global Assessment; SDI, Systemic Lupus International Collaborating Clinics/American College of Rheumatology Damage Index; SELENA-SLEDAI, Safety of Oestrogen in Lupus Erythematosus National Assessment-SLE Disease Activity Index; SFI, SLE Flare Index; SLE, systemic lupus erythematosus.



with independent variables treatment group, baseline prednisone level, country, baseline SELENA-SLEDAI score and complement levels. Data are displayed in a histogram produced post hoc. Time to severe SFI flare over 52 weeks was analysed using a Cox proportional hazards model, adjusting for country, baseline SELENA-SLEDAI score and complement levels.

For the primary endpoint, any patients who dropped out prior to Week 52 and had no double-blind assessment within 28 days of Day 364 and/or used a prohibited medication or a non-allowed dose of restricted medication were considered treatment failures and counted as non-responders in the analysis. Last observation carried forward principles were applied to address other components of missing data. For cumulative prednisone dose, missing data were imputed using the 28-day average prior to last visit.

## RESULTS

### Study population and patient disposition

Patients were recruited between May 2011 and July 2014, and follow-up for the double-blind analysis continued until September 2015. Of 1116 patients screened, 709 (63.5%) were enrolled and 407 (36.5%) failed screening. The main reasons for screening failure were not meeting inclusion and exclusion criteria (365/407, 89.7%), withdrawal by the patient (29/407, 7.1%) and investigator decision (11/407, 2.7%) (figure 1B). In total, 707 of 709 patients were randomised to receive placebo (n=236) or belimumab (n=471); two patients discontinued and were never randomised. Two further patients were identified as ineligible for inclusion after randomisation and did not receive the first dose of the study drug. Thus, the safety population comprised 705 patients (placebo n=235; belimumab n=470) and the mITT population comprised 677 patients (placebo n=226; belimumab n=451). A total of 567/705 (80.4%) patients in the safety population completed the 52-week study; 56 (23.8%) patients in the placebo group and 82 (17.4%) patients in the belimumab group withdrew prior to study completion (figure 1B). Demographic and baseline disease characteristics were similar between treatment groups (table 1). Most patients were being treated with concomitant steroid medication (placebo n=223 (98.7%); belimumab n=443 (98.2%)). The use of antimalarial concomitant medication was higher in the China cohort (77.0%) compared with the non-China (Korea and Japan) cohort (49.4%). The use of other immunosuppressive/immunomodulatory agents, however, was higher in the non-China cohort (73.1%) compared with the China cohort (62.1%) (see online supplementary table 1).

### Efficacy

Significant improvements in favour of belimumab were seen for the primary endpoint, with more patients in the belimumab group achieving an SRI4 response at Week 52 compared with placebo (53.8% (240/446) vs 40.1% (87/217); OR 1.99 (95% CI: 1.40, 2.82;  $P<0.0001$ )) (figure 2A). The results of all sensitivity analyses were consistent with the primary analysis (data not shown). Significant differences between the treatment groups were seen from Week 12 and maintained until Week 52. Analysis of the individual components of the primary endpoint demonstrated significant improvements in favour of belimumab for all three parameters (PGA and BILAG data not shown; SELENA-SLEDAI is described below).

Significant improvements were also seen for all four key secondary endpoints. A significantly greater proportion of patients in the belimumab group achieved a  $\geq 4$  point reduction from baseline in SELENA-SLEDAI score at Week 52

compared with placebo (55.7% (249/447) vs 42.2% (92/218); OR 2.00 (95% CI: 1.41, 2.83;  $P=0.0001$ )) (figure 2B). Overall, more patients receiving belimumab achieved an SRI7 response at Week 52 compared with those receiving placebo (32.4% (119/367) vs 23.5% (43/183); OR 1.76 (95% CI: 1.13, 2.74;  $P=0.0116$ )) (figure 2C). A lower percentage of patients in the belimumab group experienced a severe flare compared with placebo (12.0% (54/451) vs 22.1% (50/226)), equating to a 50% lower risk in those receiving belimumab (HR 0.50 (95% CI: 0.34, 0.73;  $P=0.0004$ )) (figure 2D). In patients with a baseline prednisone dose of  $>7.5$  mg/day, there was a significant reduction in steroid use favouring belimumab (rank ANCOVA,  $P=0.0288$ ). Although the median number of days that prednisone equivalent dose was  $\leq 7.5$  mg/day and/or reduced by 50% was zero in both groups, the 75th centile was larger for belimumab compared with placebo (213.5 vs 172.0 days), reflecting the longer durations of reduced steroid use seen for patients in the belimumab group compared with placebo (figure 3).

Across the population, cumulative prednisone dose (or equivalent) over 52 weeks was significantly lower in the belimumab group versus placebo ( $P=0.0005$ ; table 2). Compared with the placebo group, more patients in the belimumab group had a dose reduction of  $\geq 25\%$  to  $\leq 7.5$  mg/day during Weeks 40–52 (10.9% vs 15.6%; OR 1.68 (95% CI: 0.95, 2.96;  $P=0.0721$ )).

The duration of Week 52 SRI response was summarised by monthly intervals ( $\geq 1$ – $\geq 11$  months). A greater proportion of patients in the belimumab group compared with placebo had an SRI response through Week 52 for each monthly duration interval (see online supplementary table 2).

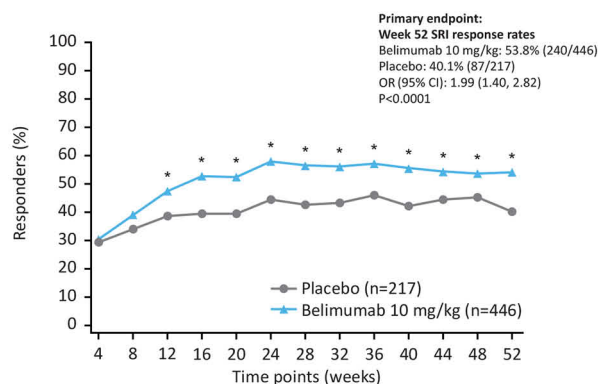
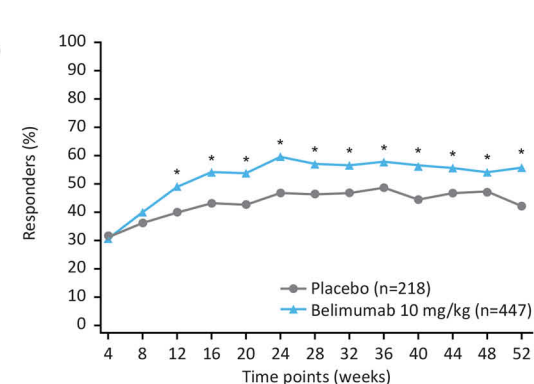
Among patients with an A or B BILAG domain score at baseline, BILAG improvement at Week 52 in favour of belimumab was seen in the haematology ( $P=0.0445$ ), mucocutaneous ( $P=0.0250$ ), musculoskeletal ( $P=0.0078$ ) and general ( $P=0.0069$ ) organ domains only; however, it is important to note that patient numbers were small (see online supplementary table 3).

### Safety

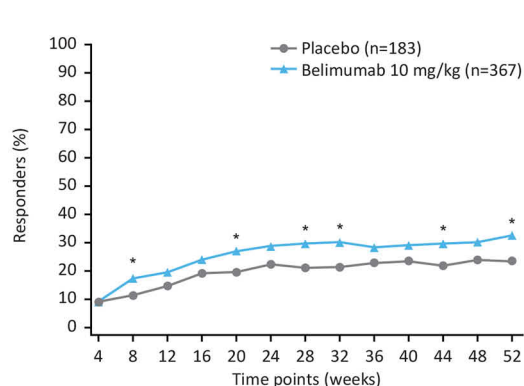
The overall incidence of AEs was similar between the placebo and belimumab groups (75.7% vs 74.9%) (table 3) and most AEs were mild or moderate in severity. The most common AE reported in the placebo and belimumab groups was upper respiratory tract infection (16.6% vs 13.8%, respectively). The incidence of SAEs was higher for placebo (18.3%) than belimumab (12.3%), with similar rates of infectious SAEs reported in both groups (5.5% vs 5.3%, respectively).

Incidences of AESIs were similar between the placebo and belimumab groups (table 3). There were no completed suicides and no suicide attempts within the belimumab group; there was one suicide attempt in the placebo group and one case of suicide ideation in the belimumab group. According to the C-SSRS assessment, of patients with no C-SSRS pretreatment suicidal ideation or behaviour, five reported on-treatment suicidal ideation (placebo 2/231 (0.9%); belimumab 3/467 (0.6%)); this included the aforementioned single cases of suicidal behaviour/attempt (placebo group) and severe suicidal ideation (belimumab group). A solid tumour malignancy (cervical carcinoma) was reported in one patient receiving belimumab. One patient in the placebo group experienced fatal respiratory failure after developing cold symptoms/productive cough/dyspnoea; the incident was considered by the investigator to be unrelated to study treatment and no autopsy was performed.

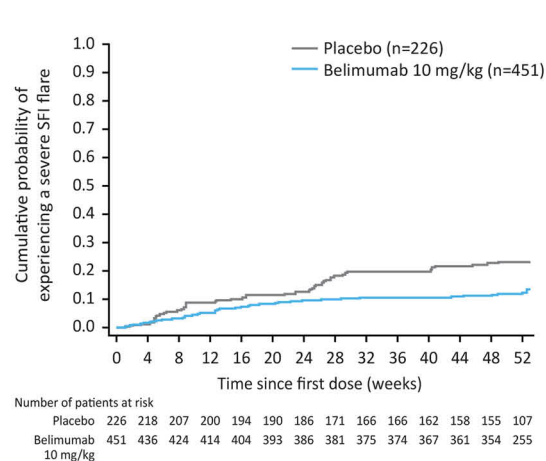
(A) SRI4 response

(B) SELENA-SLEDAI  $\geq 4$  point response

(C) SRI7 response



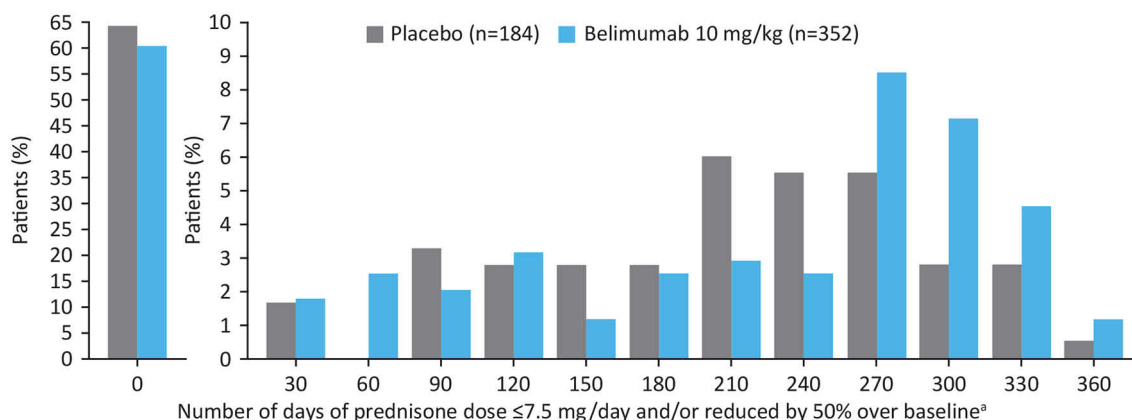
(D) Time to first severe flare



**Figure 2** Efficacy endpoints, by visit (modified intent-to-treat population). (A) SRI4 response; (B) SELENA-SLEDAI  $\geq 4$  point reduction; (C) SRI7 response and (D) time to first severe flare. \*P<0.05 (logistic regression model for belimumab vs placebo with independent variables treatment group, country, baseline SELENA-SLEDAI score ( $\leq 9$  vs  $\geq 10$ ) and baseline complement levels (low C3 and/or C4 vs no low C3 or C4)). C3/C4, complement 3/ complement 4; SELENA-SLEDAI, Safety of Oestrogen in Lupus Erythematosus National Assessment-SLE Disease Activity Index; SFI, SLE Flare Index; SRI, SLE Responder Index.

A higher than expected screen failure rate in China was noted for positive hepatitis B virus (HBV) core antibody, and eligibility criteria were subsequently changed in a China-specific amendment so that those with negative hepatitis B surface antigen, but positive HBV core antibody (anti-HBc)

and negative HBV DNA by PCR, became eligible for enrolment. As a result of this amendment, a total of 78 patients, representing 16.6% of the safety population (n=470), were randomised into the belimumab treatment arm with positive HBV core antibody and no detectable HBV DNA (HBV DNA



**Figure 3** Histogram showing the number of days of daily prednisone dose  $\leq 7.5$  mg/day (or equivalent) and/or reduced by 50% from baseline among patients with baseline daily prednisone dose  $> 7.5$  mg/day (mITT population).<sup>a</sup>Histogram produced post hoc; the number of days indicates the midpoint of the category, that is, Day 30 represents Days 15–45. mITT, modified intent-to-treat.

**Table 2** Prednisone\* dose over 52 weeks (mITT population)

	Placebo (n=226)	Belimumab 10 mg/kg (n=451)
Baseline prednisone dose, mean (SD), mg/day	17.2 (10.82)	16.0 (10.66)
Cumulative prednisone dose over 52 weeks, median (25th, 75th percentile), mg†	4758.1 (3597.5, 6695.0)	4190.0 (3090.0, 5475.0)
P value‡		0.0005
Number of patients with baseline prednisone dose >7.5 mg/day, n (%)	184 (81.4)	352 (78.0)
Number of days that prednisone was reduced to ≤7.5 mg/day and/or by 50% from baseline over 52 weeks, median (25th, 75th percentile)§	0 (0.0, 172.0)	0 (0.0, 213.5)
P value¶		0.0288
Patients with prednisone reduction by ≥25% from baseline to ≤7.5 mg/day during Weeks 40–52, n (%)§	20 (10.9)	55 (15.6)
P value¶		0.0721

\*Prednisone or equivalent.

†Daily dose imputed after dropout/treatment failure.

‡Versus placebo (rank ANCOVA).

§Among patients with prednisone dose &gt;7.5 mg/day at baseline.

¶Versus placebo (logistic regression).

ANCOVA, analysis of covariance; mITT, modified intent-to-treat.

by PCR negative). No patients in this study experienced a reactivation of hepatitis B.

There were no clinically meaningful differences between treatment groups in haematology, clinical chemistry or liver function parameters. One patient in the belimumab group had a Grade 3 low IgG value that was a shift from a baseline grade of 0; this patient did not experience an infection within 30 days of the date of the Grade 3 IgG value. The total rate of immunogenic response (a positive anti-belimumab antibody result) was low (placebo 14/235 (6.0%); belimumab 1/470 (0.2%)).

## DISCUSSION

This double-blind, randomised, placebo-controlled clinical study assessed the efficacy and safety of intravenous belimumab 10 mg/kg as add-on therapy to SoC in patients with active, autoantibody-positive SLE from North East Asia. Belimumab treatment produced early and sustained improvements in disease activity, while reducing prednisone dose, with a safety profile consistent with previous studies.<sup>16–19</sup>

The study met its primary endpoint, with a higher proportion of patients treated with belimumab achieving an SRI4 response at Week 52 compared with placebo. Significant differences in favour of belimumab were seen as early as Week 12. Furthermore, significantly higher proportions of patients in the belimumab group achieved each of the three individual response components that made up the composite primary endpoint, including a ≥4 point reduction in SELENA-SLEDAI score (a secondary endpoint), and all sensitivity analyses of the primary endpoint were statistically significant for belimumab at Week 52. These results are consistent with those from the BLISS-52 and BLISS-76 trials of intravenous belimumab, and the BLISS-SC trial of subcutaneous belimumab, performed across several worldwide locations.<sup>16–18</sup> Further efficacy benefits demonstrated with belimumab in the present study, compared with placebo, included a significantly higher proportion of patients achieving an SRI7 response at Week 52. The risk of a severe flare was also reduced in the belimumab group, compared with placebo, consistent with results from BLISS-52,<sup>16</sup> BLISS-76<sup>17</sup> and BLISS-SC.<sup>18</sup> Interestingly, when severe flares occurred in the belimumab group, they occurred early in the study, possibly before the full belimumab effect was observed.

As mentioned previously, reducing corticosteroid dose is a key treatment goal in SLE.<sup>8</sup> This study builds on findings from previous

studies, which suggest that belimumab has a corticosteroid-sparing effect.<sup>16–18</sup> In the present study, cumulative prednisone dose over the 52-week treatment period was significantly lower in patients receiving belimumab, compared with those receiving placebo, and dose reductions to ≤7.5 mg/day during the last 12 weeks of the study occurred more frequently in the belimumab group. Our findings are in line with a recent post hoc analysis of the pooled BLISS-52 and BLISS-76 trials, which demonstrated a significantly smaller increase in cumulative corticosteroid dose over 1 year in patients receiving belimumab, compared with those receiving placebo, along with more patients with reductions in oral corticosteroid dose, and fewer patients with increases in oral corticosteroid dose.<sup>31</sup>

It should be noted that this study was not powered to compare risks against the background of different SoC treatments. As expected, antimalarial use was higher in the China cohort compared with the non-China cohort; the antimalarial hydroxychloroquine was not available in Japan at the time of the study. Moreover, the study excluded some patient populations, including paediatric patients and those with severe active lupus nephritis or CNS lupus, therefore belimumab could not be evaluated in these patient subsets. Furthermore, rare safety signals cannot be ruled out until a much larger number of patients have been treated with belimumab for longer than 52 weeks. Despite these limitations, the study provides valuable information about the effect of belimumab treatment in a North East Asian population of patients with active, autoantibody-positive SLE.

This fourth pivotal belimumab trial in SLE achieved statistical significance for the primary endpoint and all four prespecified key secondary endpoints, including reduction in prednisone use. The reduction in prednisone use in patients on high-dose prednisone (>7.5 mg/day) and the longer duration of reduced use observed within the belimumab treatment group provide encouraging results for belimumab as an add-on to current SoC. Overall, efficacy and safety results were consistent with intravenous and subcutaneous belimumab data until now, with no new safety issues identified and no suicides or suicide attempts in the belimumab group. This study provides evidence that supports the use of intravenous belimumab 10 mg/kg, in addition to SoC, as a viable treatment option for patients with SLE in North East Asia who present with disease activity despite SoC treatment.

**Table 3** Summary of treatment-emergent AEs (safety population)

AEs, n (%)	Placebo (n=235)	Belimumab 10 mg/kg (n=470)
Any AE	178 (75.7)	352 (74.9)
Treatment-related AE*	55 (23.4)	136 (28.9)
SAE	43 (18.3)	58 (12.3)
Severe AE	25 (10.6)	39 (8.3)
SAE and/or severe AE	47 (20.0)	64 (13.6)
AE resulting in study agent discontinuation	22 (9.4)	29 (6.2)
Death	1 (0.4)	0 (0.0)
AEs by preferred term†, ‡		
Upper respiratory tract infection	39 (16.6)	65 (13.8)
Nasopharyngitis	26 (11.1)	56 (11.9)
Pyrexia	21 (8.9)	30 (6.4)
Viral upper respiratory tract infection	15 (6.4)	34 (7.2)
Cough	16 (6.8)	30 (6.4)
Diarrhoea	14 (6.0)	28 (6.0)
Herpes zoster	12 (5.1)	29 (6.2)
Headache	16 (6.8)	23 (4.9)
Urinary tract infection	11 (4.7)	21 (4.5)
Upper respiratory tract infection bacterial	13 (5.5)	16 (3.4)
Abdominal pain	8 (3.4)	17 (3.6)
Urinary tract infection bacterial	2 (0.9)	20 (4.3)
Abdominal pain upper	6 (2.6)	15 (3.2)
Dizziness	7 (3.0)	14 (3.0)
Nausea	4 (1.7)	17 (3.6)
Hypokalaemia	8 (3.4)	11 (2.3)
Oropharyngeal pain	10 (4.3)	7 (1.5)
Lupus nephritis	7 (3.0)	7 (1.5)
AESIs		
Malignant neoplasms	0	1 (0.2)
Post-infusion systemic reactions§	29 (12.3)	61 (13.0)
Serious	1 (0.4)	0
Infections of special interest	20 (8.5)	36 (7.7)
Depression¶	6 (2.6)	9 (1.9)
Completed suicide**	0	0
Suicide attempts and ideation††	1 (0.4)‡‡	1 (0.2)§§

\*Considered by the investigator to be at least possibly related to study agent.

†Patients were only counted once per MedDRA preferred term.

‡In ≥3% patients in either treatment group.

§Per anaphylactic reaction CMQ broad search.

¶Per MedDRA preferred term.

\*\*As per GSK adjudication.

††Per standard MedDRA query.

‡‡This was recorded as a suicide attempt.

§§This was recorded as suicidal ideation.

AE, adverse event; AESI, adverse event of special interest; CMQ, customised MedDRA query; GSK, GlaxoSmithKline; MedDRA, Medical Dictionary for Regulatory Activities; SAE, serious adverse event.

**Acknowledgements** Medical writing support was provided by Nicole Cash, MRSc, PhD, and Louisa Pettinger, PhD, Fishawack Indicia Ltd, UK, and was funded by GlaxoSmithKline (GSK).

**Contributors** DB and DAR contributed to the study design, data analyses and interpretation. FZ, S-CB, YT and JZ contributed to the acquisition of data. MC, SE and DG contributed to data analyses and interpretation. All authors reviewed the manuscript and approved the final version for submission.

**Funding** This study was funded by GSK.

**Competing interests** DB, MC, SE, DG and DAR are employees of GSK and hold shares in the company. YT receives consulting fees, speaking fees and/or honoraria from AbbVie, Chugai, Daiichi-Sankyo, Bristol-Myers Squibb, Mitsubishi-Tanabe, Astellas, Takeda, Pfizer, Asahi-Kasei, YL Biologics, Sanofi, Janssen, Eli Lilly and GSK and has received research grants from Mitsubishi-Tanabe, Takeda, Daiichi-Sankyo, Chugai, Bristol-Myers Squibb, MSD, Astellas, AbbVie and Eisai.

**Patient consent** Obtained.

**Ethics approval** The study was conducted in accordance with the ethical principles of the Declaration of Helsinki, International Council for Harmonisation on Good Clinical Practice and the applicable country-specific regulatory requirements.

**Provenance and peer review** Not commissioned; externally peer reviewed.

**Open Access** This is an Open Access article distributed in accordance with the Creative Commons Attribution Non Commercial (CC BY-NC 4.0) license, which permits others to distribute, remix, adapt, build upon this work non-commercially, and license their derivative works on different terms, provided the original work is properly cited and the use is non-commercial. See: <http://creativecommons.org/licenses/by-nc/4.0/>

© Article author(s) (or their employer(s) unless otherwise stated in the text of the article) 2018. All rights reserved. No commercial use is permitted unless otherwise expressly granted.

## REFERENCES

- Campbell R, Cooper GS, Gilkeson GS. Two aspects of the clinical and humanistic burden of systemic lupus erythematosus: mortality risk and quality of life early in the course of disease. *Arthritis Rheum* 2008;59:458–64.
- Cervera R, Khamashta MA, Font J, et al. Morbidity and mortality in systemic lupus erythematosus during a 10-year period: a comparison of early and late manifestations in a cohort of 1,000 patients. *Medicine* 2003;82:299–308.
- Bernatsky S, Boivin JF, Joseph L, et al. Mortality in systemic lupus erythematosus. *Arthritis Rheum* 2006;54:2550–7.
- Rahman A, Isenberg DA. Systemic lupus erythematosus. *N Engl J Med* 2008;358:929–39.
- Bruce IN, O’Keeffe AG, Farewell V, et al. Factors associated with damage accrual in patients with systemic lupus erythematosus: results from the Systemic Lupus International Collaborating Clinics (SLICC) Inception Cohort. *Ann Rheum Dis* 2015;74:1706–13.
- Bertsias G, Ioannidis JP, Boletis J, et al. EULAR recommendations for the management of systemic lupus erythematosus. Report of a Task Force of the EULAR Standing Committee for International Clinical Studies Including Therapeutics. *Ann Rheum Dis* 2008;67:195–205.
- Gladman DD, Urowitz MB, Rahman P, et al. Accrual of organ damage over time in patients with systemic lupus erythematosus. *J Rheumatol* 2003;30:1955–9.
- van Vollenhoven RF, Mosca M, Bertsias G, et al. Treat-to-target in systemic lupus erythematosus: recommendations from an international task force. *Ann Rheum Dis* 2014;73:958–67.
- Do RK, Hatada E, Lee H, et al. Attenuation of apoptosis underlies B lymphocyte stimulator enhancement of humoral immune response. *J Exp Med* 2000;192:953–64.
- Litinskiy MB, Nardelli B, Hilbert DM, et al. DCs induce CD40-independent immunoglobulin class switching through BlyS and APRIL. *Nat Immunol* 2002;3:822–9.
- Kayagaki N, Yan M, Seshasayee D, et al. BAFF/BLyS receptor 3 binds the B cell survival factor BAFF ligand through a discrete surface loop and promotes processing of NF-kappaB2. *Immunity* 2002;17:515–24.
- Batten M, Groom J, Cachero TG, et al. BAFF mediates survival of peripheral immature B lymphocytes. *J Exp Med* 2000;192:1453–66.
- Baker KP, Edwards BM, Main SH, et al. Generation and characterization of LymphoStat-B, a human monoclonal antibody that antagonizes the bioactivities of B lymphocyte stimulator. *Arthritis Rheum* 2003;48:3253–65.
- EMA. Benlysta EPAR, 2016. [http://www.ema.europa.eu/docs/en\\_GB/document\\_library/EPAR\\_-\\_Summary\\_for\\_the\\_public/human/002015/WC500110153.pdf](http://www.ema.europa.eu/docs/en_GB/document_library/EPAR_-_Summary_for_the_public/human/002015/WC500110153.pdf) (accessed Mar 2017).
- FDA. Benlysta™ prescribing information, 2014. [http://www.accessdata.fda.gov/drugsatfda\\_docs/label/2014/125370s053lbl.pdf](http://www.accessdata.fda.gov/drugsatfda_docs/label/2014/125370s053lbl.pdf) (accessed Mar 2017).
- Navarra SV, Guzmán RM, Gallacher AE, et al. Efficacy and safety of belimumab in patients with active systemic lupus erythematosus: a randomised, placebo-controlled, phase 3 trial. *Lancet* 2011;377:721–31.
- Furie R, Petri M, Zamani O, et al. A phase III, randomized, placebo-controlled study of belimumab, a monoclonal antibody that inhibits B lymphocyte stimulator, in patients with systemic lupus erythematosus. *Arthritis Rheum* 2011;63:3918–30.
- Stohl W, Schwarting A, Okada M, et al. Efficacy and safety of subcutaneous belimumab in systemic lupus erythematosus: A fifty-two-week randomized, double-blind, placebo-controlled study. *Arthritis Rheumatol* 2017;69:1016–27.
- Furie R, Wallace DJ, Aranow C, et al. 7-year safety and efficacy of belimumab in patients with systemic lupus erythematosus. *Poster presentation 768 at the 2016 ACR/ARHP Annual Meeting, November 11–16. Washington DC, USA, 2016.*
- Clinicaltrials.gov. A multi-center, continuation trial of belimumab (HGS1006, LymphoStat-B™) a fully human monoclonal anti-BlyS antibody in subjects with systemic lupus erythematosus (SLE) who completed the Phase 3 Protocol HGS1006-C1056 or HGS1006-C1057. 2017 <https://clinicaltrials.gov/ct2/show/NCT00712933> (accessed 8 Mar 2017).



- 21 Mok CC, Lau CS. Lupus in Hong Kong Chinese. *Lupus* 2003;12:717–22.
- 22 Xiang YJ, Dai SM. Prevalence of rheumatic diseases and disability in China. *Rheumatol Int* 2009;29:481–90.
- 23 Li M, Zhang W, Leng X, *et al*. Chinese SLE treatment and research group (CSTAR) registry: I. major clinical characteristics of chinese patients with systemic lupus erythematosus. *Lupus* 2013;22:1192–9.
- 24 Liu J, Yang F, Sui D, *et al*. Clinical and pathological characteristics of male patients with systemic lupus erythematosus from northeast China: a ten-year retrospective study. *Int J Clin Exp Pathol* 2017;10:6082–91.
- 25 Shim JS, Sung YK, Joo YB, *et al*. Prevalence and incidence of systemic lupus erythematosus in South Korea. *Rheumatol Int* 2014;34:909–17.
- 26 Hochberg MC. Updating the American College of Rheumatology revised criteria for the classification of systemic lupus erythematosus. *Arthritis Rheum* 1997;40:1725–25.
- 27 Furie RA, Petri MA, Wallace DJ, *et al*. Novel evidence-based systemic lupus erythematosus responder index. *Arthritis Rheum* 2009;61:1143–51.
- 28 Petri M, Buyon J, Kim M. Classification and definition of major flares in SLE clinical trials. *Lupus* 1999;8:685–91.
- 29 Petri M, Kim MY, Kalunian KC, *et al*. Combined oral contraceptives in women with systemic lupus erythematosus. *N Engl J Med* 2005;353:2550–8.
- 30 Buyon JP, Petri MA, Kim MY, *et al*. The effect of combined estrogen and progesterone hormone replacement therapy on disease activity in systemic lupus erythematosus: a randomized trial. *Ann Intern Med* 2005;142:953–62.
- 31 van Vollenhoven RF, Petri M, Wallace DJ, *et al*. Cumulative corticosteroid dose over fifty-two weeks in patients with systemic lupus erythematosus: Pooled analyses from the phase III belimumab trials. *Arthritis Rheumatol* 2016;68:2184–92.